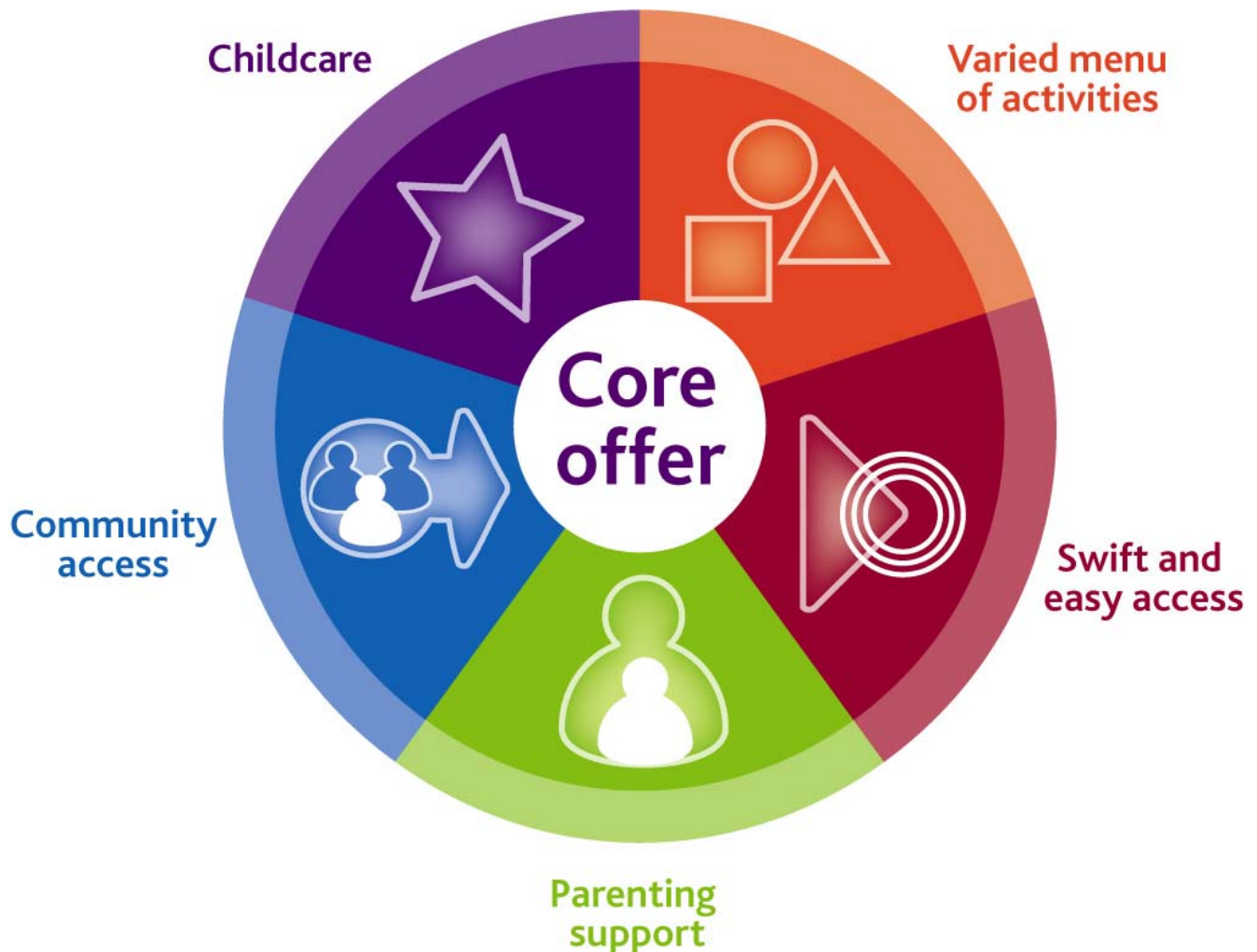


Extended Services

Supporting schools to deliver the full core offer by 2010



www.milton-keynes.gov.uk/extended-schools Tel: 01908 258023

Extended services assists schools and communities in developing a range of services and facilities, in and around schools, in partnership with others to meet the needs of **children, young people, schools and the local community.**

Childcare



Quality and affordable in partnership with local agencies and/or the school.

Varied menu
of activities



Homework clubs, sports, tuition, visits to museums, arts & craft activities.

Community
access



To schools and community sites for ICT, sports, leisure activities.

Parenting
support



Information sessions including parents evenings and family learning sessions.

Swift and
easy access



To health services, language therapists, police, advice and counseling.